

225ft DP-1 Platform Supply Vessel -15146



Ocean Marine Brokerage Service |
Louisiana
(985) 448-0409 / Fax: (985) 302-0984

Vessel # 15146 / SC
Price: \$1,100,000

Contact:
steve@oceanmarine.com

REGISTRATION

YEAR BUILT:	1974/Rebuilt 2009 & 2021
BUILDER:	Bollinger Shipyards, Inc
FLAG:	U.S
CLASSIFICATION:	None Required
CONSTRUCTION:	Steel
GROSS / NET TONS:	396 / 737 ITC / 269 / 221 ITC
CERTIFIED:	No
# OF PASSENGERS:	38
LOADLINE:	None Required

LOCATION

LOCATION:	US GULF
-----------	---------

DIMENSIONS

LENGTH:	225 FT. / 73.82 MT.
BEAM:	38 FT. / 12.47 MT.
DRAFT:	9.0 FT. / 2.74 MT.
DRAFT LOADED:	11.5 FT. / 3.77 MT.
REG. LENGTH:	197.2 FT. / 64.7 MT.
EYE LEVEL:	0.0 FT.

CAPACITIES

	Gal.	M Tons	Barrels
FUEL:	65681	235.0	1564.0
POTABLE WATER:	84000	336.0	2000.0
BALLAST:	82656	296.0	1968.0
DECK CAPACITY:	537 LT		

PERFORMANCE

SPEED:	13 KTS	
CONSUMPTION:	GPH: 0.0	Tons Per Day: 0.0

ACCOMMODATIONS

STATEROOMS:	18
STATEROOMS:	6

MACHINERY

MAIN ENGINES:	2 EMD / 12-645-E
HORSEPOWER:	4
REDUCTION GEAR:	Reintjes RATIO: 3.44:1
GENERATORS:	GM 6-71 Detroit Diese (2) - 99 KW
BOW THRUSTER:	1 x HP Schottel - Controllable Pitch / Cummins K 19 / HP: 750hp
STERN THRUSTER:	No

DECK EQUIPMENT

CRANES:	None
STERN ROLLER:	Stern ramp hydraulic
PUSH KNEES:	No
PUSH WINCH MAKE:	None
SPUD WELLS:	No
SPUD WINCH:	No

ELECTRONICS

AUTO PILOT:	Yes
DEPTH FINDER:	Yes
PLOTTER:	No
EPIRB:	YES / 1x
GPS:	Yes
RADIO VHF:	YES / 3x

RADIO SSB: YES
RADAR: YES / 2X

OTHER EQUIPMENT

AIS

DESCRIPTION

225ft PSV for Sale. Fitted with DP-1 system (needs control head) and hydraulic stern ramp. Reported in good operation

Details pertaining to this vessel are obtained from sources believed to be reliable, however we can not guarantee their accuracy. Buyers should instruct surveyors and agents to investigate details for validity. All offers are subject to prior sale, changes in price and / or inventory, and without notice.

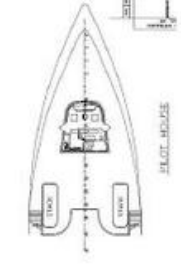
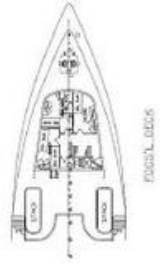
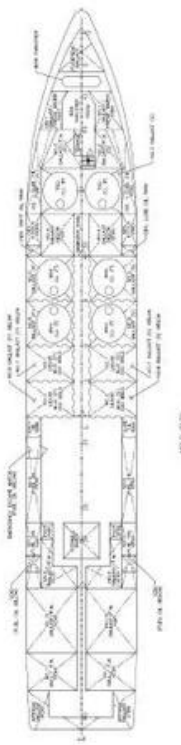
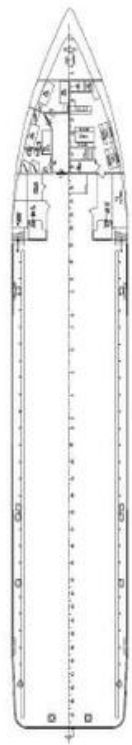
NOTE: See Photos on next page



02.11.2020 11:57AM



02.11.2020 11:56AM







15146sc



15146sc





15146sc



15146sc





15146sc



15146sc