

60+ Man Accommodation Barge - 15195



Ocean Marine Brokerage Service |
Louisiana
(985) 448-0409 / Fax: (985) 302-0984

Vessel # 15195 / BG
Price: \$1,300,000

Contact: Steve Kokinos III -
steve3@oceanmarine.com

REGISTRATION

YEAR BUILT:	Rebuilt 2010
BUILDER:	Custom
FLAG:	U.S.
CLASSIFICATION:	None Required
CONSTRUCTION:	Steel
CERTIFIED:	No
# OF PASSENGERS:	60 can be increased
LOADLINE:	None Required

LOCATION

LOCATION:	South Louisiana
------------------	-----------------

DIMENSIONS

LENGTH:	165 FT. / 54.13 MT.
BEAM:	42 FT. / 13.78 MT.
DRAFT:	2.8 FT. / 0.85 MT.
DRAFT LOADED:	0.0 FT. / 0.0 MT.
REG. LENGTH:	0.0 FT. / 0.0 MT.
EYE LEVEL:	0.0 FT.

CAPACITIES

	Gal.	M Tons	Barrels
FUEL:	28000	100.0	667.0
POTABLE WATER:	60000	240.0	1429.0
BALLAST:	0	0.0	0.0

PERFORMANCE

CONSUMPTION: GPH: 0.0 Tons Per Day: 0.0

ACCOMMODATIONS

STATEROOMS: 60

MACHINERY

MAIN ENGINES: None
REDUCTION GEAR: None
NOZZLE: None
GENERATORS: Sound Attenuated
 (2) - 140 KW
BOW THRUSTER: No
STERN THRUSTER: None

DECK EQUIPMENT

STERN ROLLER: None
PUSH KNEES: No
PUSH WINCH MAKE: None
SPUD WELLS: Yes (2) 35ft
SPUD WINCH: Yes hydraulic

ELECTRONICS

AUTO PILOT: No
DEPTH FINDER: No
PLOTTER: No
EPIRB: No
GPS: No
RADIO VHF: No
RADIO SSB: No
RADAR: No

DESCRIPTION

48-80 Man Accommodation barge For Charter or sale. Approx. 42' x 55' open front deck space can be used for work or storage area or can put additional portable sleepers. Approx. 42' x 30' open back deck space can be used for work or storage area or can put portable sleeper units The top deck of quarters was a heliport. In use as an outside lounging area or can put portable sleepers, approx. 40' X 60'. Updates in 2010 - 48 new beds and mattresses New paint inside New air conditioning (20 tons) and heat All new stainless commercial kitchen New reach in 49 CF freezer in pantry New reach in 49 CF refrigerator in pantry Large steam serving table All new pots, pans, plates, eating utensils, glasses, coffee cups, etc. New galley tables with stainless steel tops New soft drink dispenser New milk dispenser New yogurt machine (2 Flavor and twist) New micro wave New small refrigerator for small bottle juices in galley New ice machines (2 - 400 lbs. each) New 20' X 10' walk in cooler and freezer (each 10' X 10") New clothes washers and dryers, 4 each in separate building New jet spray juice dispenser New cereal dispensers New coffee makers All new plates and utensils New dish satellite New flat screen T V in every bed room, T V room and galley New flooring in entire quarters 2 - New 175 KVA sound attenuated generators All new plumbing (potable, grey water and sewerage) New pumping system for potable water with back up 6 New 80 gall water heaters New 100 man sewerage treatment plant New storage area below deck with walk down entry and stairs 2 - New potable water tanks (65,000 gallons total) 2 - New diesel tanks (13,500 gallons each). New hand rails around barge and upper deck. In Sept 12' New paint on bottom, sides, and deck of barge New paint on outside of quarters Stainless steel guard rails on top deck with stainless steel cable New anodes on barge New Sept. 2012; 20" X 40' spuds and spud wells New hydraulics for spuds Removed all bad wood in bedrooms New paint in bedrooms All new flooring as of Sept. 2012 New suspended ceiling as of September 2012 Added 2 more showers Added (2) 80 gallon water heaters Added building housing 4 clothes washer and 4 clothes dryers with clothes folding area Upgraded fire alarm system. In 2015- New paint on barge All new interior paint Outside of quarters pressure cleaned All new suspended ceiling inside quarters New Vulcan stainless steel electric range Additional floor model electric deep fryer (2 total now)

Details pertaining to this vessel are obtained from sources believed to be reliable, however we can not guarantee their accuracy. Buyers should instruct surveyors and agents to investigate details for validity. All offers are subject to prior sale, changes in price and / or inventory, and without notice.

NOTE: See Photos on next page



15195bg



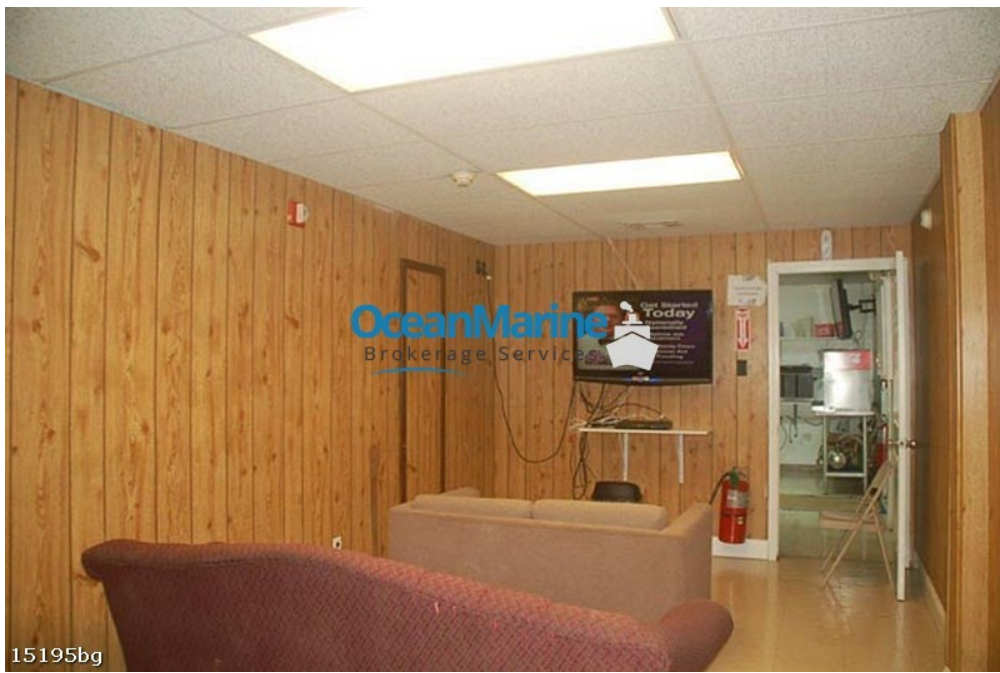
15195bg



15195bg



15195bg





15195bg



15195bg



15195bg



15195bg



15195bg



15195bg