

135ft Steel Stern Dragger - 15945



Ocean Marine Brokerage Service |
Louisiana
(985) 448-0409 / Fax: (985) 302-0984

Vessel # 15945 / ST
Price: \$1,800,000

Contact: Steve Kokinos, Sr -
steve@oceanmarine.com

REGISTRATION

YEAR BUILT:	1990
FLAG:	Foreign
CLASSIFICATION:	LLOYDS REGISTER - Transport Canada
CONSTRUCTION:	Steel
GROSS / NET TONS:	624 / 149
CERTIFIED:	Yes
LOADLINE:	Lloyds - Transport Canada

LOCATION

LOCATION:	West Coast - Canada
-----------	---------------------

DIMENSIONS

LENGTH:	130.12 FT. / 39.66 MT.
BEAM:	29.53 FT. / 9.0 MT.
DRAFT:	12.96 FT. / 3.95 MT.
DRAFT LOADED:	0.0 FT. / 0.0 MT.
REG. LENGTH:	112.2 FT. / 34.2 MT.
EYE LEVEL:	0.0 FT.

CAPACITIES

	Gal.	M Tons	Barrels
FUEL:	31700	113.0	755.0
POTABLE WATER:	11887	48.0	283.0
BALLAST:	0	0.0	0.0

PERFORMANCE

SPEED:	12 KTS
CONSUMPTION:	GPH: 0.0 Tons Per Day: 0.0

ACCOMMODATIONS

STATEROOMS:	22
-------------	----

FISH HOLDS

FISH HOLDS:	Type.	CU. FT.	LBS.
	FREEZER	3380	

PERMITS

PERMITS WITH BOAT:	None - TYPE: None
--------------------	-------------------

MACHINERY

MAIN ENGINES:	1 Sulzer
HORSEPOWER:	1760
PROP:	CPP Propeller Bridge Controlled
GENERATORS:	Cat 3304 & 3412 (2) - 431 KW
BOW THRUSTER:	No
STERN THRUSTER:	No

DECK EQUIPMENT

CRANES:	3 ton deck crane
STERN ROLLER:	Stern ramp & gallows frame
PUSH KNEES:	None
SPUD WELLS:	No
SPUD WINCH:	No

FISHING EQUIPMENT

SHRIMP WINCH:	None
RIGGING:	Hake Processing & dragger

ELECTRONICS

AUTO PILOT:	Yes
DEPTH FINDER:	Yes
PLOTTER:	Yes
EPIRB:	Yes
GPS:	Yes
RADIO VHF:	Yes
RADIO SSB:	Yes
RADAR:	Yes

OTHER EQUIPMENT

AIS, Navtex, VMS

DESCRIPTION

Used 130ft Steel Stern Hake-Pollock Factory Vessel For Sale. Factory deck with all equipment. The factory is set up for Hake or Pollock, (Pelagic) H/g Vessel has a Marel Batcher grader to grade to size and batch, The freezing is 4 Horizontal plate freezers run off 3 Sabroe 110 compressors. 0 ton per day of slush ice, we also have an separate RSW system. Brand New freezer hold refrigeration system. 2 x 25 ton each Gilsons (added in last 4 years). Engine rebuild with new parts, Pistons, liners etc. 2 new this year Sabroe 110 ammonia compressors, 3rd one is 1.5 years old. All hydraulic piping on deck is stainless steel. Every pipe on the boat has been replaced has been done in Stainless. New stove last year. New radars in last 3 years. Marport headline unit. Furuno sonar. New auto trawl , (Rapp Hydema) 4 years ago .2 full propeller , (Spare). Toyo H/G machine , Pelagic (110 fish per minute) . We have a Toki machine (70 fish per minute) for our Rockfish and flatfish. Marel batcher grader that does size grading and batches, This system costs us \$250,000 USD. Its an ammonia system that can freeze 35 to 40 ton a day. The holding Capacity is close to 8 million lb. 2 Swan nets, one is 5 years old the other 3 years, one just came out of the shop and had a (\$20,000) rebuild the other in now getting a full rebuild at Swan. 2 Bottom nets, one is New just put on the boat, the other 2 years old, 2 cod ends one we use on the bottom and a newer one for mid water. 1 set 9m Tyboron doors , 1 set 6m Polar doors. Lloyds Class is up to date. Main engine has had every cylinder replaced, piston liner etc, I say this because I wanted a new starting point, even if the liners spec was okay I changed them anyway. We always have a spare (new) piston, connecting rod, liner, rod bearings. Head, water pump, injectors, on hand as the lead time to get them from Europe means down time. The shore generator has just been rebuilt, , we use the Shaft Generator off the man engine, 480 kilowatt while we are at sea, the only time we run the shore genset is when we are unloading,. We also have a 150 kilowatt generator on the stern we use when we are tied up for extended periods. We have an Ammonia system on board, 3 Sabroe compressors, we have 1 spare compressor and 1 spare electric motor ready at all times. We also run the compressors with frequency drives so we carry a spare one of these as well. We just put new railing on the trawl deck. We have a full range of modern electronics, We have a Marport system with the newer trawl eye cod end sensor as well as the headline unit (brand new) with the symmetry for bottom fishing. We have a spare prop for the vessel. I will insure that you get every spare part we have , all the gear that goes with the vessel will go, nothing will be excluded. Anything this vessel has ever needed it gets. Vessel was last in drydock in 2022 all is current as required by Lloyds. 25 tons per day ice machine. See attachment sheet.

Details pertaining to this vessel are obtained from sources believed to be reliable, however we can not guarantee their accuracy. Buyers should instruct surveyors and agents to investigate details for validity. All offers are subject to prior sale, changes in price and / or inventory, and without notice.

NOTE: See Photos on next page

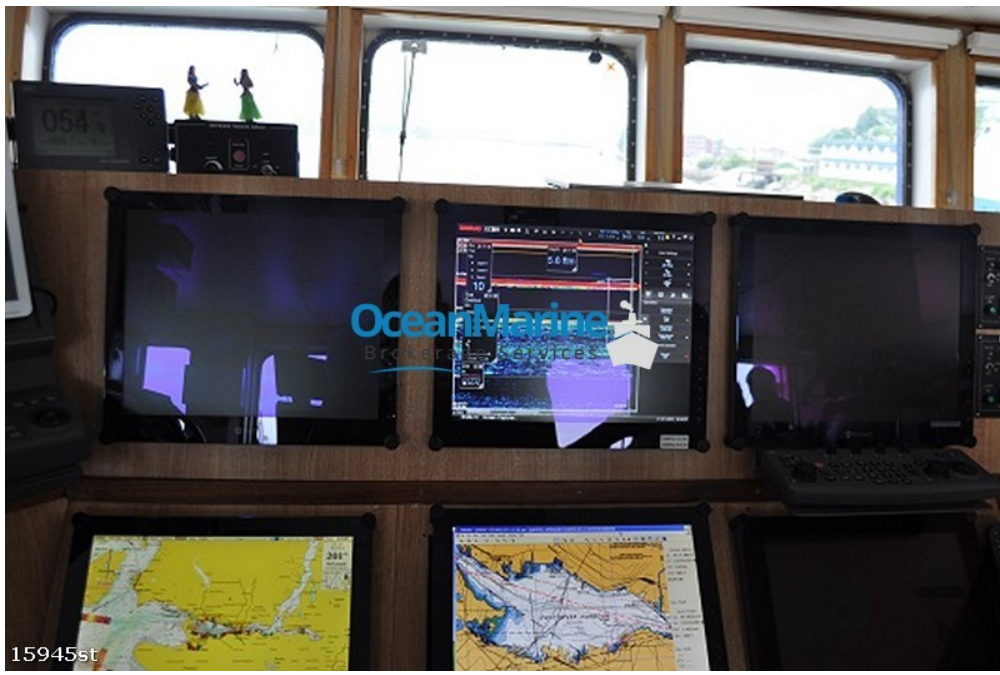


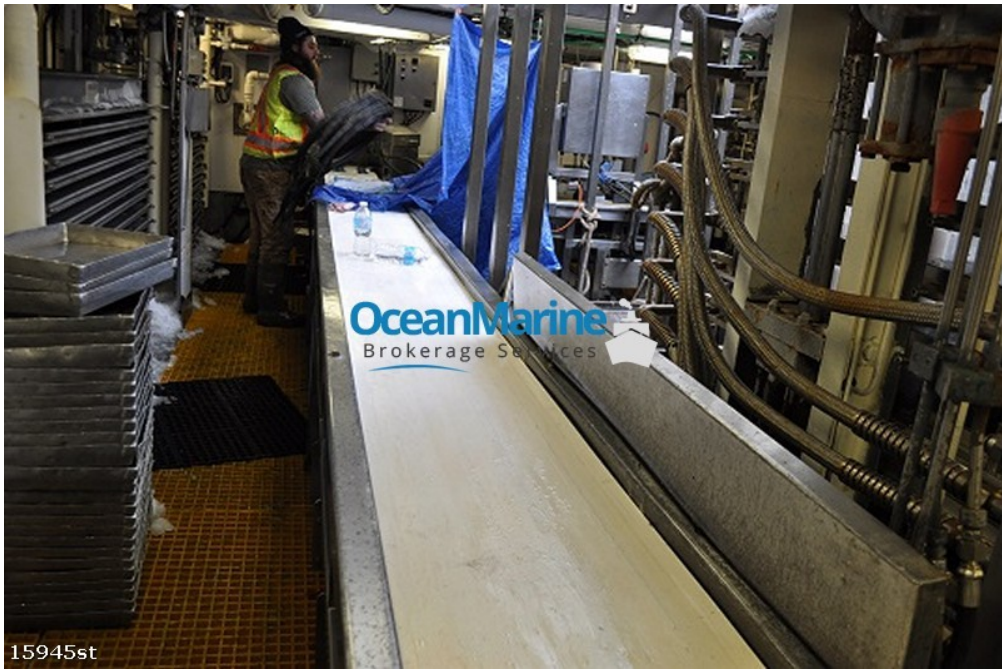
15945st



15945st















15945st

