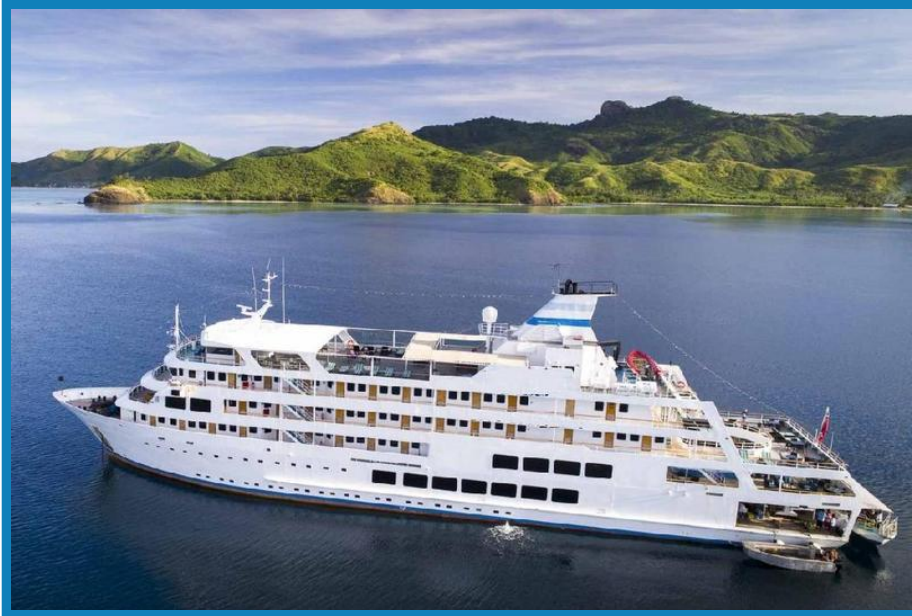


# 241ft /156 Passenger Cruise Ship- 16389



Ocean Marine Brokerage Service |  
Louisiana  
(985) 448-0409 / Fax: (985) 302-0984

Vessel # 16389 / PS

Contact: Steve Kokinos, Sr -  
[steve@oceanmarine.com](mailto:steve@oceanmarine.com)

## REGISTRATION

<b>YEAR BUILT:</b>	1996
<b>BUILDER:</b>	Government built MARINE SHIPYARD & SLIPWAYS
<b>FLAG:</b>	Foreign
<b>CLASSIFICATION:</b>	built to Lloyds and taken out of class in 2012
<b>CONSTRUCTION:</b>	Steel
<b>GROSS / NET TONS:</b>	3126
<b>CERTIFIED:</b>	Yes
<b># OF PASSENGERS:</b>	156
<b>LOADLINE:</b>	Lloyds expired (local)

## LOCATION

<b>LOCATION:</b>	South Pacific
------------------	---------------

## DIMENSIONS

<b>LENGTH:</b>	241.34 FT. / 73.56 MT.
<b>BEAM:</b>	45.93 FT. / 14.0 MT.
<b>DRAFT:</b>	11.81 FT. / 3.6 MT.
<b>DRAFT LOADED:</b>	0.0 FT. / 0.0 MT.
<b>REG. LENGTH:</b>	0.0 FT. / 0.0 MT.
<b>EYE LEVEL:</b>	0.0 FT.

## CAPACITIES

	Gal.	M Tons	Barrels
FUEL:	80000	286.0	1905.0
POTABLE WATER:	13209	53.0	314.0
BALLAST:	0	0.0	0.0

## PERFORMANCE

SPEED:	13 KTS
CONSUMPTION:	GPH: 0.18    Tons Per Day: 0.01

## ACCOMMODATIONS

STATEROOMS:	156
STATEROOMS:	63 passengers 24 crew

## MACHINERY

MAIN ENGINES:	2 Yanmar Z260A-ET
PROP:	Yes FPP
NOZZLE:	NO
GENERATORS:	Yanmar FC-3-AA 4K602F4 (2)
BOW THRUSTER:	Yes Schotell / HP: 130
STERN THRUSTER:	No

## DECK EQUIPMENT

CRANES:	Yes
PUSH KNEES:	NO
PUSH WINCH MAKE:	None
SPUD WELLS:	None
SPUD WINCH:	None

## ELECTRONICS

AUTO PILOT:	Yes
DEPTH FINDER:	Yes
PLOTTER:	Yes
EPIRB:	Yes
GPS:	Yes
RADIO VHF:	YES
RADIO SSB:	Yes
RADAR:	Yes

---

## OTHER EQUIPMENT

AIS,Navtex,GMDSS A1,SART

---

## DESCRIPTION

241ft Domestic Cruise Ship. built by Government entity in 1996. She was built to Lloyds and taken out of class in 2012. What makes this vessel unique, is her small size and shallow draft allowing her to reach remote reefs, islands and shallow bays, where bigger ships cannot access. Her design blends big ship function and features, whilst maintaining boutique personal feel. Ship boasts 63 Suites, Staterooms and Cabins each with private bathroom ensuite on/off air-conditioning and hair dryer. Suites have 2 ensuite, fridge, lounge and tea and coffee making. Each Stateroom and Cabin has a twin/convert double bed & approximately 14 sq metres. Suites are approx. 28 sq metres. Suites and Staterooms open onto outside walkways and have picture windows. Cabins open to an inside passageway and have port-holes facing the outside. 24 crew twin, triple and quad cabins, some with en-suite and most with 1 ensuite for 2 cabins (crew deck not shown). Fresh water swimming pool, spa pool on sun deck, sun deck, and mini gym, glass-bottomed boat, snorkeling and dive vessels, two bars, two crew mess, two lounges and single sitting dining saloon, gift shop, chart house, library with TV, 2 laundries (commercial and guest), lift from D Deck to sun deck, hydraulic platform on the stern of the ship for easy access. Commercial Galley and cool-rooms. 1x40person Glass Bottom Boat, 2 x 19-person aluminium tenders, 1 x 10-person zodiac tender. stern platform for Glass bottom boat, 2 x side loading dive boats, Dinel door system. Sellers are willing to meet the market and will accept any reasonable offer.

---

Details pertaining to this vessel are obtained from sources believed to be reliable, however we can not guarantee their accuracy. Buyers should instruct surveyors and agents to investigate details for validity. All offers are subject to prior sale, changes in price and / or inventory, and without notice.

**NOTE: See Photos on next page**

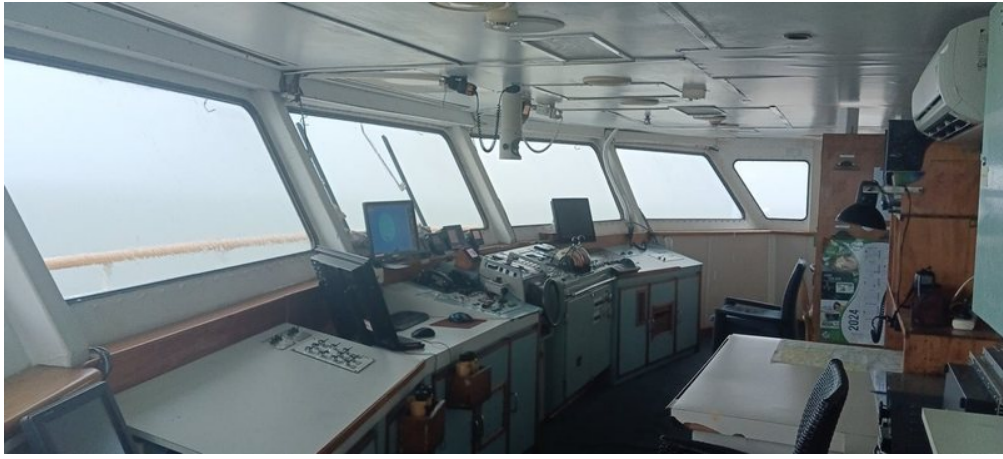














**Accommodation:** has 63 recently refurbished Tabua Suites, Staterooms and Cabins. Every cabin type features a private bathroom ensuite, on/off air-conditioning, hair dryer, 240 volt power, international shaver point, Pure Fiji soaps, shampoo & towels serviced daily. Each cabin is approximately 14sqm. Tabua Suites are approximately 28sqm. Staterooms and Suites open onto the outside deck and have two windows.

**Tabua Suites (4)** feature a bedroom (twin/double) with ensuite bathroom, plus a separate day room with chair, settee, desk, TV & DVD player, refrigerator, tea & coffee facilities and second bathroom.

**Connecting Family Staterooms (6)** located on A & C decks (twin/double)

**"B" Ocean Stateroom (33)** located on A and B deck

**"C" Ocean Staterooms (16)** located on C deck

**"D" Porthole Cabins (10)** open onto an inside passageway (twin/double/bunk triple/bunk quad).

