

# 83ft Steel Trawler - 16568



Ocean Marine Brokerage Service |  
Louisiana  
(985) 448-0409 / Fax: (985) 302-0984

**Vessel # 16568 / ST**  
**Price: \$80,000**

**Contact:**  
[steve@oceanmarine.com](mailto:steve@oceanmarine.com)

## REGISTRATION

|                   |               |
|-------------------|---------------|
| YEAR BUILT:       | 1979          |
| BUILDER:          | Laforce, Al.  |
| FLAG:             | U.S           |
| CLASSIFICATION:   | None required |
| CONSTRUCTION:     | Steel         |
| GROSS / NET TONS: | 111           |
| CERTIFIED:        | Yes           |
| LOADLINE:         | NONE          |

## LOCATION

|           |               |
|-----------|---------------|
| LOCATION: | EAST COAST-US |
|-----------|---------------|

## DIMENSIONS

|               |                     |
|---------------|---------------------|
| LENGTH:       | 83 FT. / 27.23 MT.  |
| BEAM:         | 22 FT. / 6.74 MT.   |
| DRAFT:        | 9.0 FT. / 2.9 MT.   |
| DRAFT LOADED: | 0.0 FT. / 0.0 MT.   |
| REG. LENGTH:  | 69.2 FT. / 22.7 MT. |
| EYE LEVEL:    | 0.0 FT.             |

## CAPACITIES

|                | Gal. | M Tons | Barrels |
|----------------|------|--------|---------|
| FUEL:          | 3500 | 13.0   | 83.0    |
| POTABLE WATER: | 200  | 1.0    | 5.0     |
| BALLAST:       | 0    | 0.0    | 0.0     |

## PERFORMANCE

|              |                               |
|--------------|-------------------------------|
| SPEED:       | 10 KTS                        |
| CONSUMPTION: | GPH: 0.0    Tons Per Day: 0.0 |

## ACCOMMODATIONS

|             |   |
|-------------|---|
| STATEROOMS: | 5 |
| STATEROOMS: | 2 |

## FISH HOLDS

|             |       |         |      |
|-------------|-------|---------|------|
| FISH HOLDS: | Type. | CU. FT. | LBS. |
|             | ICE   | 1216615 |      |

## PERMITS

|                    |    |
|--------------------|----|
| PERMITS WITH BOAT: | NO |
|--------------------|----|

## MACHINERY

|                 |   |
|-----------------|---|
| MAIN ENGINES:   | 1 GM-12V71 HRS. 3000                      |
| HORSEPOWER:     | 350                                       |
| REDUCTION GEAR: | Twin Disc MG516    RATIO: 6:1             |
| PROP:           | 60" 6" shaft                              |
| GENERATORS:     | John Deere/Northern Lights<br>(2) - 40 KW |
| BOW THRUSTER:   | NO  |
| STERN THRUSTER: | None                                      |

## DECK EQUIPMENT

|               |                   |
|---------------|-------------------|
| CRANES:       | None              |
| STERN ROLLER: | No                |
| WINCH TYPE:   | Pull masters      |
| PUSH KNEES:   | NO                |
| RAKES:        | Pull Master winch |
| SPUD WELLS:   | No                |

SPUD WINCH: No

---

## FISHING EQUIPMENT

SHRIMP WINCH: McElroy 504DD

RIGGING: A Frame

---

## ELECTRONICS

AUTO PILOT: Simrad AP35

DEPTH FINDER: Furuno FCV 585

PLOTTER: Yes

EPIRB: Yes

GPS: Koden & Furuno

RADIO VHF: YES

RADIO SSB: NO

RADAR: Furuno X2

---

## OTHER EQUIPMENT

AIS, Starlink, Sitex Sea Water Temp.

---

## DESCRIPTION

83ft Steel Trawler For Sale. Rigged for lobstering. Sleeps 5. Has 17" trap hauler. (2) below deck RSW lobster tanks (20,000 lbs capacity). Open stern. Has aft steering and engine control station. Pictures are dated. Sellers may consider offers after inspection.

---

Details pertaining to this vessel are obtained from sources believed to be reliable, however we can not guarantee their accuracy. Buyers should instruct surveyors and agents to investigate details for validity. All offers are subject to prior sale, changes in price and / or inventory, and without notice.

**NOTE: See Photos on next page**



16538st



16538st











16538st



16538st



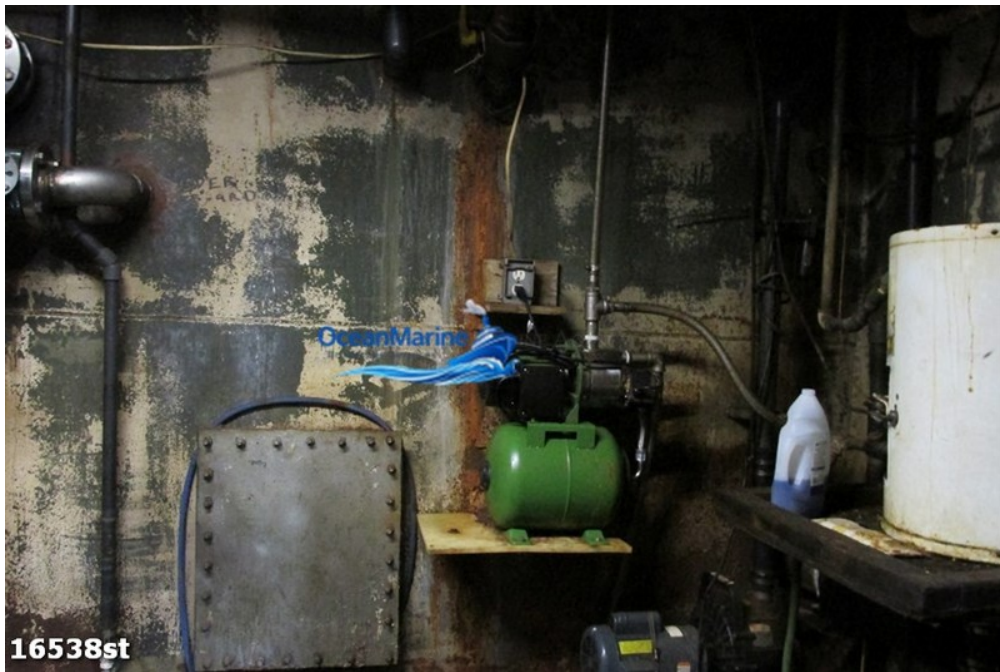
16538st



16538st



16538st



16538st