

# 65ft Aluminum Crew Boat - 6889



Ocean Marine Brokerage Service |  
Louisiana  
(985) 448-0409 / Fax: (985) 302-0984

Vessel # 6889 / CR

Contact:  
[nick@oceanmarine.com](mailto:nick@oceanmarine.com)

## REGISTRATION

|                   |               |
|-------------------|---------------|
| YEAR BUILT:       | 1982          |
| BUILDER:          | Camcraft      |
| FLAG:             | U.S           |
| CLASSIFICATION:   | None Required |
| CONSTRUCTION:     | Aluminium     |
| GROSS / NET TONS: | 63 / 43       |
| CERTIFIED:        | Yes           |
| LOADLINE:         | None Required |

## LOCATION

|           |         |
|-----------|---------|
| LOCATION: | US GULF |
|-----------|---------|

## DIMENSIONS

|               |                      |
|---------------|----------------------|
| LENGTH:       | 65 FT. / 19.83 MT.   |
| BEAM:         | 19.9 FT. / 6.53 MT.  |
| DRAFT:        | 5.0 FT. / 1.53 MT.   |
| DRAFT LOADED: | 0.0 FT. / 0.0 MT.    |
| REG. LENGTH:  | 62.2 FT. / 20.41 MT. |
| EYE LEVEL:    | 0.0 FT.              |

## CAPACITIES

|                | Gal. | M Tons | Barrels |
|----------------|------|--------|---------|
| FUEL:          | 1000 | 4.0    | 24.0    |
| POTABLE WATER: | 160  | 1.0    | 4.0     |
| BALLAST:       | 0    | 0.0    | 0.0     |

## PERFORMANCE

|              |                               |
|--------------|-------------------------------|
| SPEED:       | 22 KTS                        |
| CONSUMPTION: | GPH: 0.0    Tons Per Day: 0.0 |

## ACCOMMODATIONS

|             |   |
|-------------|---|
| STATEROOMS: | 2 |
| STATEROOMS: | 1 |

## MACHINERY

|                 |                              |
|-----------------|------------------------------|
| MAIN ENGINES:   | 2 GM-12V71                   |
| HORSEPOWER:     | 1000                         |
| REDUCTION GEAR: | Twin Disc    RATIO: 2:1      |
| NOZZLE:         | no                           |
| GENERATORS:     | Kubota<br>(2) GM-371 - 30 KW |
| BOW THRUSTER:   | No                           |
| STERN THRUSTER: | No                           |

## DECK EQUIPMENT

|               |      |
|---------------|------|
| CRANES:       | None |
| STERN ROLLER: | None |
| PUSH KNEES:   | No   |
| SPUD WELLS:   | None |
| SPUD WINCH:   | None |

## ELECTRONICS

|               |     |
|---------------|-----|
| AUTO PILOT:   | No  |
| DEPTH FINDER: | Yes |
| PLOTTER:      | No  |
| EPIRB:        | Yes |
| GPS:          | Yes |
| RADIO VHF:    | YES |
| RADIO SSB:    | Yes |

RADAR:

YES

---

## OTHER EQUIPMENT

AIS

---

## DESCRIPTION

65ft Aluminium Crew Boat For Sale. Current COI

---

Details pertaining to this vessel are obtained from sources believed to be reliable, however we can not guarantee their accuracy. Buyers should instruct surveyors and agents to investigate details for validity. All offers are subject to prior sale, changes in price and / or inventory, and without notice.

***NOTE: See Photos on next page***



6889cr



6889cr



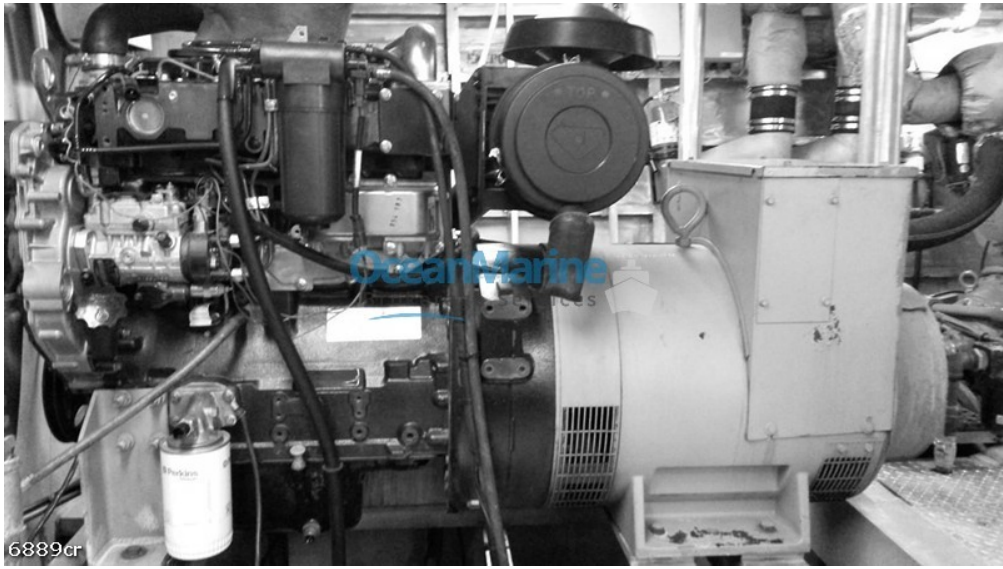
6889cr



6889cr



6889cr



6889cr



6889cr



6889cr



6889cr



LIMA MAC

SELF REGULATED  
SYNCHRONOUS AC GENERATOR

PART NO. 2102 010  
CONTINUOUS DUTY

Ocean Marine  
Brokerage Services

KVA 40 PF 80

HIGH VOLTAGE  
VOLTS 120/240  
AMPS 167/83

LOW VOLTAGE  
VOLTS 120/240  
AMPS 833/167

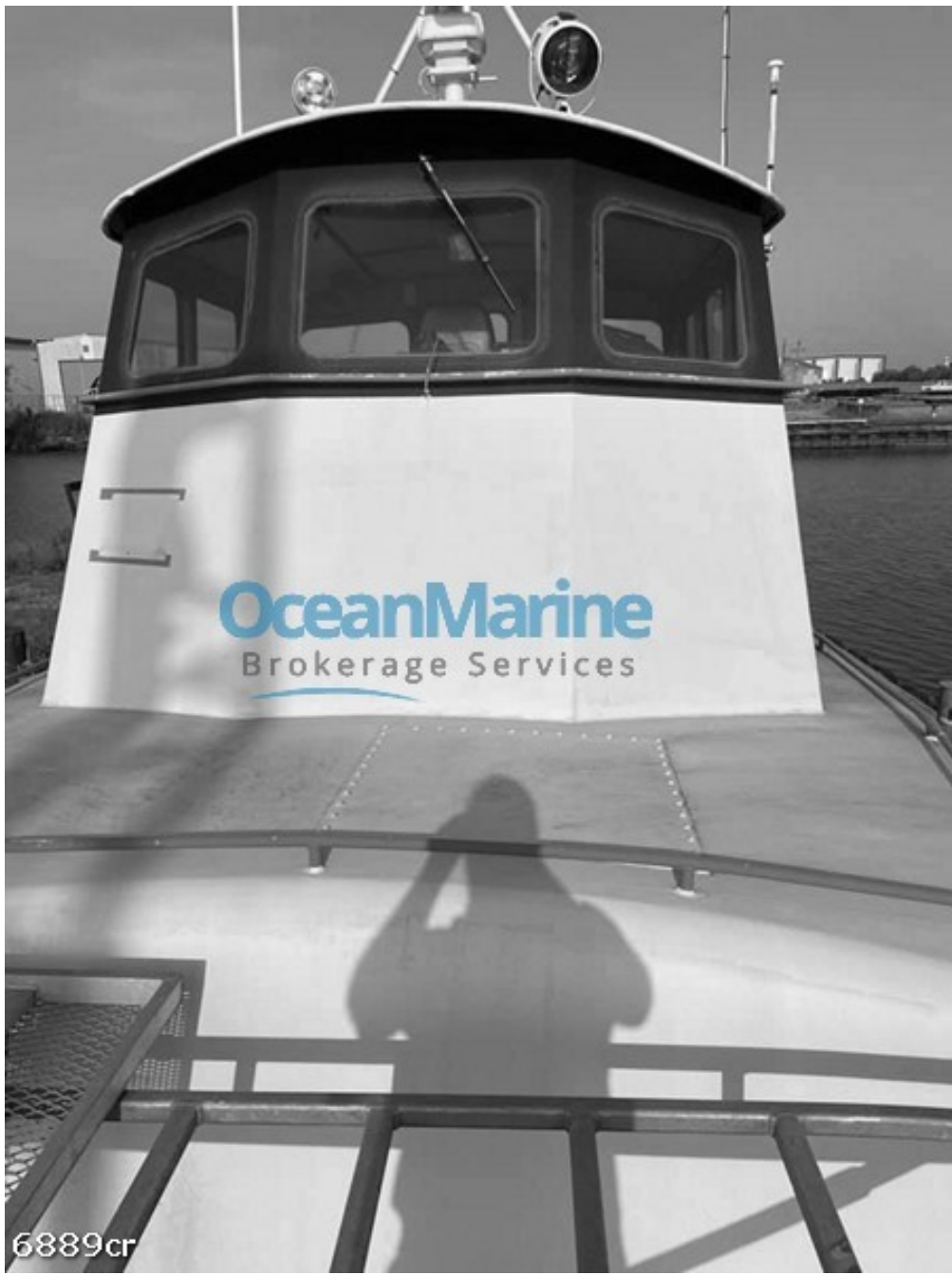
MADE IN MEXICO

MARATHON  
ELECTRIC

6889cr



6889cr



6889cr



6889cr