

# Twin Screw 30kt Swath Fast Ferry



Ocean Marine Brokerage Service |  
Louisiana  
(985) 448-0409 / Fax: (985) 302-0984

Vessel # 11035 / PS

Contact: Steve Kokinos, Sr -  
[steve@oceanmarine.com](mailto:steve@oceanmarine.com)

## REGISTRATION

YEAR BUILT:	2002
BUILDER:	Nichols Bros
FLAG:	U.S
CLASSIFICATION:	LLOYDS REGISTER
CONSTRUCTION:	Aluminium
GROSS / NET TONS:	799 / 573
CERTIFIED:	Yes
# OF PASSENGERS:	367
LOADLINE:	LLOYDS REGISTER

## LOCATION

LOCATION:	EAST COAST-US
-----------	---------------

## DIMENSIONS

LENGTH:	123 FT. / 37.52 MT.
BEAM:	59.3 FT. / 19.46 MT.
DRAFT:	11.0 FT. / 3.36 MT.
DRAFT LOADED:	0.0 FT. / 0.0 MT.
REG. LENGTH:	114.0 FT. / 34.8 MT.
EYE LEVEL:	0.0 FT.

## CAPACITIES

	Gal.	M Tons	Barrels
FUEL:	4000	16.0	95.0
POTABLE WATER:	1000	4.0	24.0
BALLAST:	0	0.0	0.0

## PERFORMANCE

SPEED:	27 KTS
CONSUMPTION:	GPH: 600.0    Tons Per Day: 46.08

## MACHINERY

MAIN ENGINES:	2 AVCO TF 40 gas turbine engines HRS. 1500
HORSEPOWER:	5740
REDUCTION GEAR:	Philadelphia epicyclic type    RATIO: 7:1
PROP:	Yes
NOZZLE:	NO
GENERATORS:	Cat 3306 Cat 3306 - 180 KW
BOW THRUSTER:	NO
STERN THRUSTER:	No

## DECK EQUIPMENT

CRANES:	No
PUSH KNEES:	NO
PUSH WINCH MAKE:	None
SPUD WELLS:	None
SPUD WINCH:	None

## ELECTRONICS

AUTO PILOT:	Robertson AP9 Mk11
DEPTH FINDER:	Furuno FE-680
PLOTTER:	Standard CP1000C
EPIRB:	Yes
GPS:	Furuno GP-70
RADIO VHF:	YES
RADIO SSB:	Yes
RADAR:	Furuno FR-1510D&FAR-2117

## DESCRIPTION

**Used twin-screw, high-speed ocean going SWATH passenger ferry For Sale.** featuring an all welded aluminum hull of the dual SWATH (Small Water-plane Area Twin Hull). Carries 362 passengers and 18 crew. Fuel can be increased to 7,000 gals. Certs are in lay up status. Ride Control: Electric motors driving stainless fins through ball-screws. All solid-state. Vessel has been sitting in excess of 5 years. Sellers have now all generators up and running with power to the main distribution panel. Interior/exterior has been cleaned and readied. Once sellers have main engines running the price of vessel will increase. Vessel is priced according to her current status. Much more info available on request. <https://youtu.be/g5ZU7IASye8>

---

Details pertaining to this vessel are obtained from sources believed to be reliable, however we can not guarantee their accuracy. Buyers should instruct surveyors and agents to investigate details for validity. All offers are subject to prior sale, changes in price and / or inventory, and without notice.

**NOTE: See Photos on next page**







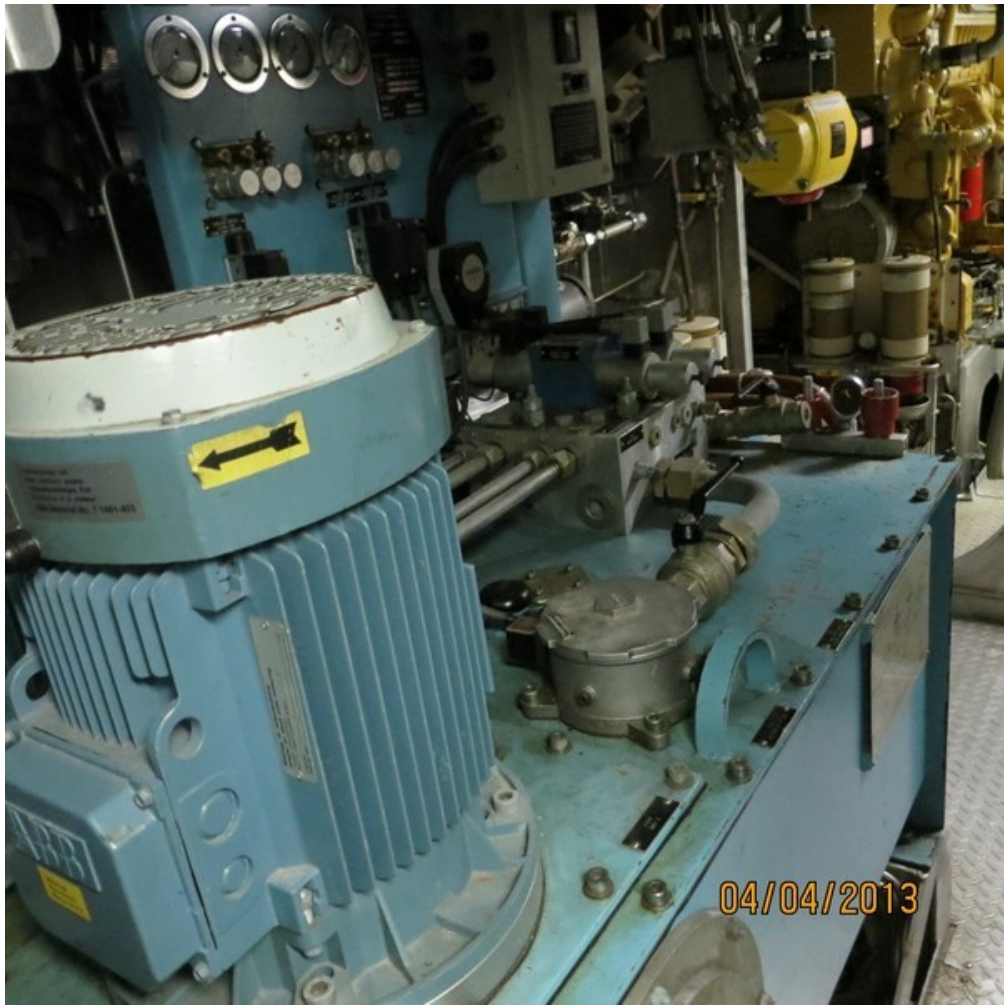


04/04/2013













04/04/2013

